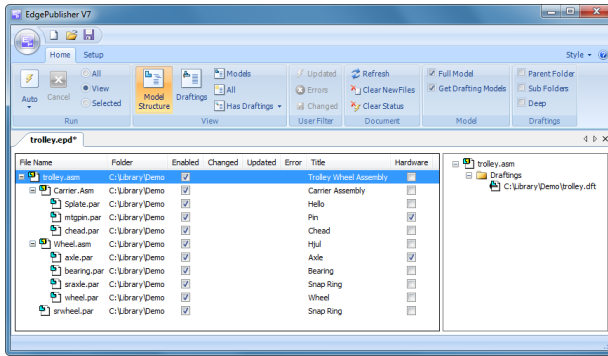


Introduction

Edge Publisher is a unique, easy-to-use application for checking, updating and publishing Solid Edge files. With *Edge Publisher* you will immediately start saving hours of work, as time consuming and tedious routines can be automated into single click operations. *Edge Publisher* is a stand-alone application and requires no server products, PDM systems or similar.

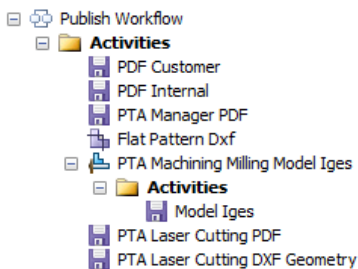


Activities

All operations performed by *Edge Publisher* are wrapped in *Activities*.

You can consider *Edge Publisher* a toolbox, where you setup and customize you own *Activities* that can be executed on Solid Edge Files. The following base *Activities* are delivered with *Edge Publisher*:

- Automatic Update draftings and associated out-of date model links and optionally report broken dimensions.
- Convert Files to all "Save As" formats.
- Export Files to all "Save As Image" formats.
- Print drafting files to printers depending on sheet sizes.
- Export Sheet Metal flat pattern dxf files.
- Check files for feature errors.
- Create *Parallel* or *Serial Activities* that can contain any number of other *Activities*. These are basically workflows.



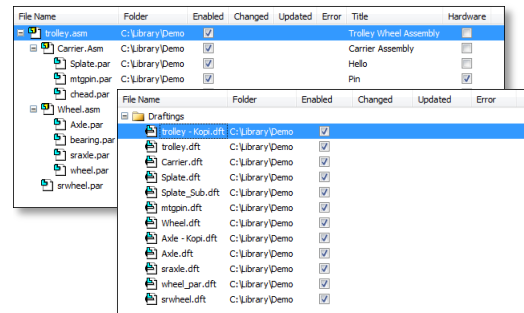
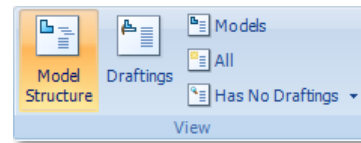
(Parallel Activity that export various file types)

All *Activities* lets you filter exactly what files and what sheets you want to process and provides full control of how output files are named and located (using file property values if appropriate).

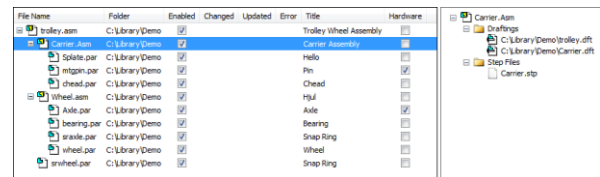
Views

When you open Solid Edge files in *Edge Publisher* they are opened in an *Edge Publisher Document*. You can add several Solid Edge files to the same document.

The files are displayed using predefined *Views* such as "Model Structure" and "Draftings" or you can create your own views displaying exactly the files you need. An example could be a view, which only displays files that has no parent draftings.



Views can also show file properties that can be modified. When selecting files, associated Draftings, Models or exported files are displayed.



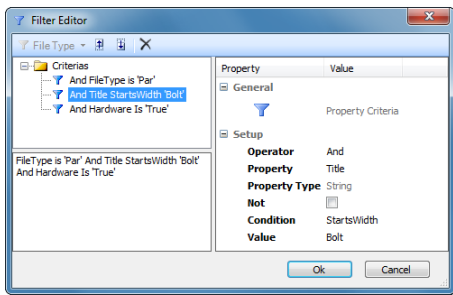
"Edge Publisher is a must have application. Take a test ride and you will wonder how you ever did without it!"

Jan Bos, Engineering manager
Geha b.v
www.gehabv.nl

Filters

Filters are an essential part of *Edge Publisher* as they are used in both *Activities* and *Views* to filter relevant Solid Edge files.

A *Filter* consists of a number of *Criteria* and *Edge Publisher* delivers *Criteria* types that make it possible to filter files on e.g. File type, File path, Property values and Parent relations.



(Filtering Part-files where "Title" starts with "Bolt" and "Hardware" is set to "True")

Quick Access

Edge Publisher loads Solid Edge links to *Quick Access* each time you open a Solid edge File.

Furthermore, when *Edge Publisher* scans for parent Draftings, all Draftings in relevant folders are loaded to *Quick Access*.

The next time a Solid Edge file is opened, only new or modified files are re-loaded, resulting in high performance file-open even on very large assemblies.

Scalability

Edge Publisher is an application for the "real world" and is developed in close contact with the users. A lot of the features and functions inside the application are a direct result of user feed-back and there are companies using *Edge Publisher* extensively on +130.000 parts assemblies.

Plug-ins

Edge Publisher is an expandable application framework and two plug-ins are currently available:

- **Replace Background**
An Activity that replaces background sheets in Solid Edge Drafting files. The sheet sizes determine what template/sheet the new background should be copied from.
- **Unite Assembly**
An Activity that unites all parts in an assembly into a part file containing a single solid body, handling the non-manifold body limitations in Parasolid.

This is used for communicating assemblies to customers where you need to protect legacy data.

"One PAR changed, used in 6 different ASM's, divided over different levels and all in the same main ASM. A nightmare to update manually, but good cup of coffee for Edge Publisher!"

Marc Boom, Cad Manager
 Eurotech Benelux BV
www.eurotechbenelux.com

Avalon PLM A/S

Ellemosen 3B
 8680 Ry
 Denmark
 Phone: +45 86 83 78 12
 Fax: +45 86 83 75 92
arne.brohuus@avaloninnovation.com

www.avaloninnovation.com
www.edgepublisher.com

Avalon Innovation AB is a rapidly growing consulting firm listed on NGM Equity since 1998. We have a unique concept where we through our three business areas Avalon Technology, Avalon Management and Avalon Finance can provide long term support to our clients from business and management processes throughout the engineering development process until competence in financing projects and companies. Avalon Innovation is the frontrunner who concentrate on core competence and to stay abreast of developments. We have offices in Karlshamn, Stockholm, Helsingborg, Malmö, Växjö, Jönköping, Uppsala, Ljungby, Västerås, Linköping, Göteborg, Södertälje, Copenhagen, Ry and Oslo, and the group has around 270 employees.